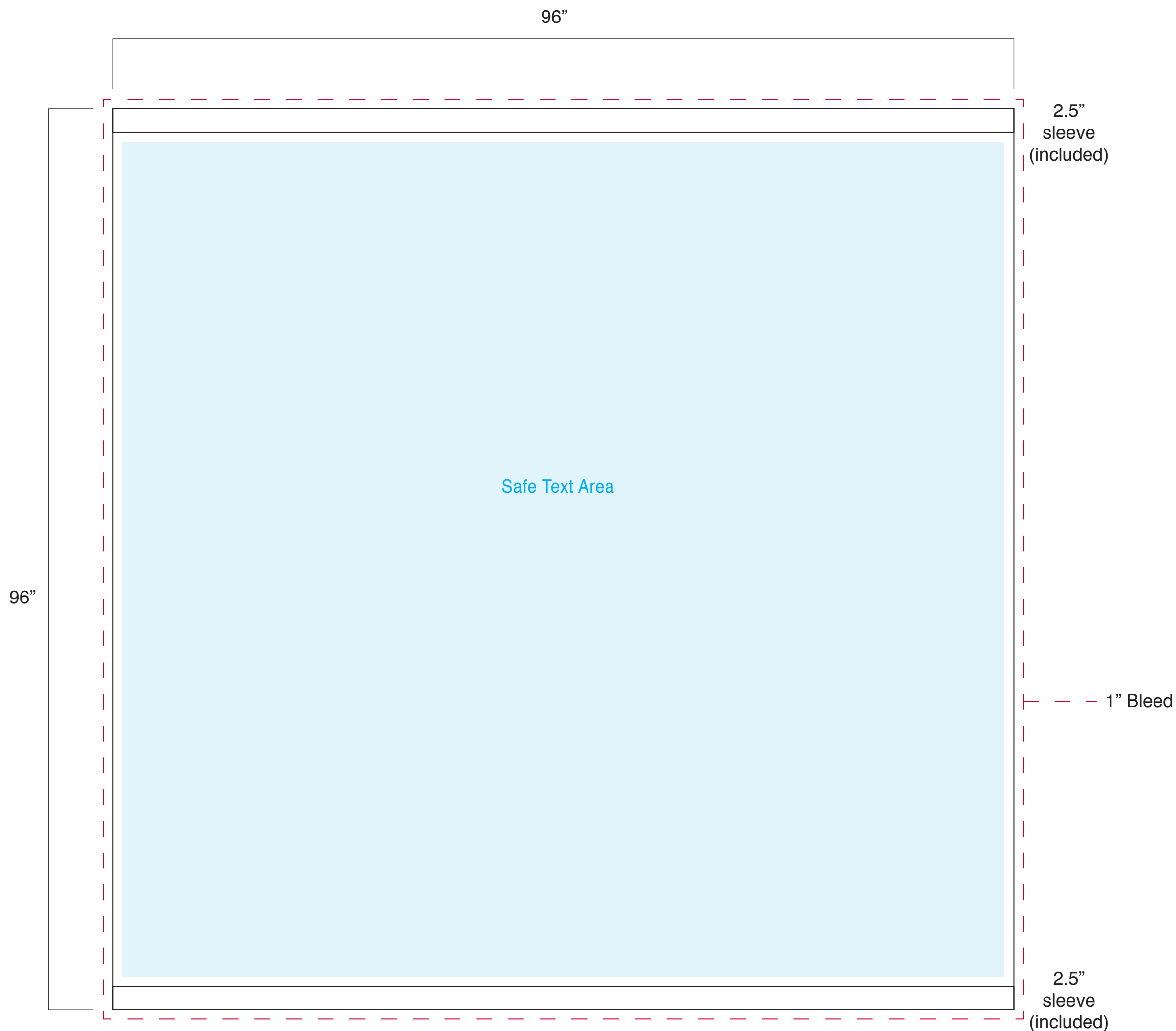


ADJUSTABLE BACKDROP

8'

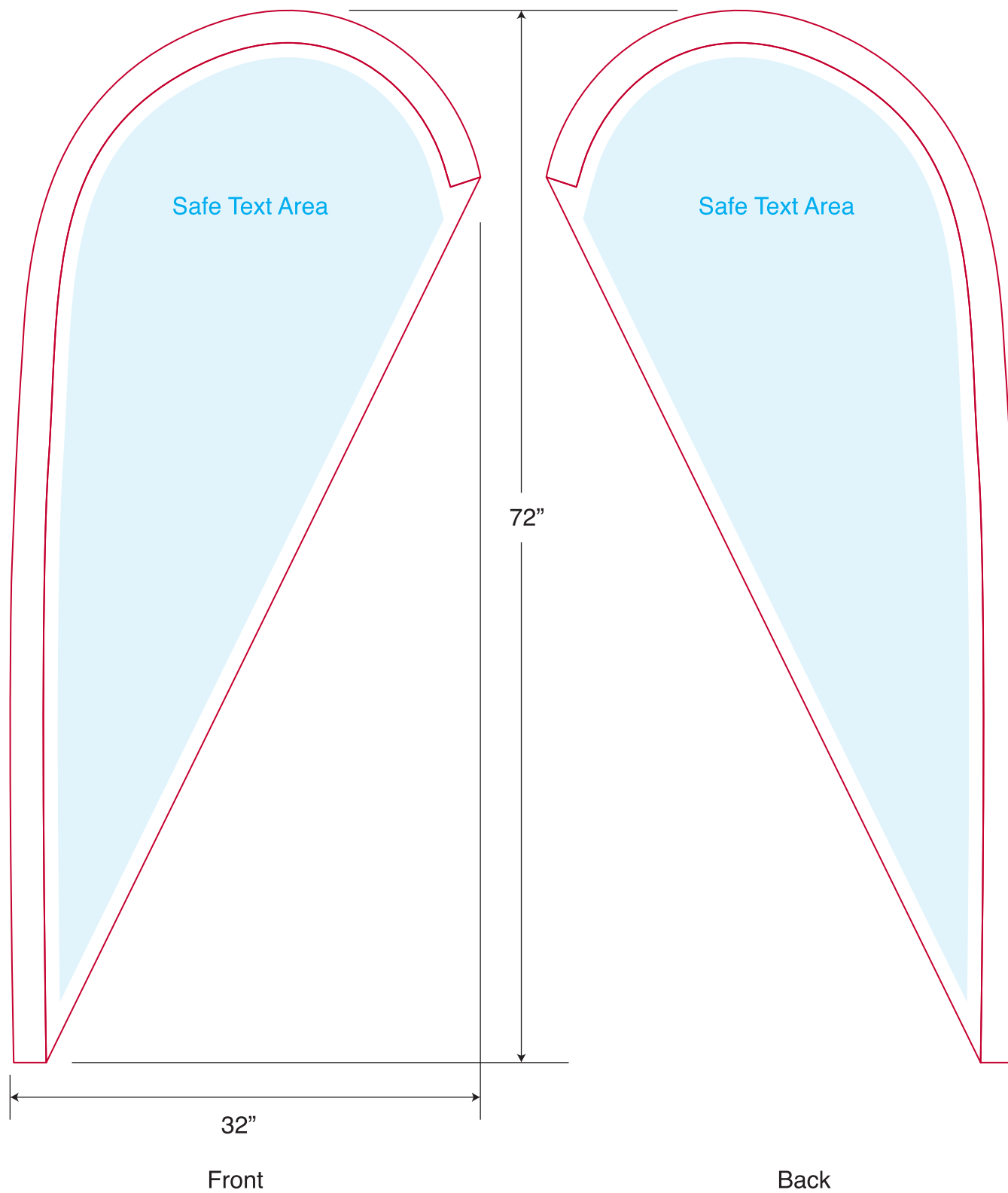


*If photographs are used in artwork, image resolution must be 2000dpi at 10% actual size or 200dpi at 100% actual size

Template 10% of actual size.

DURADOUBLE II

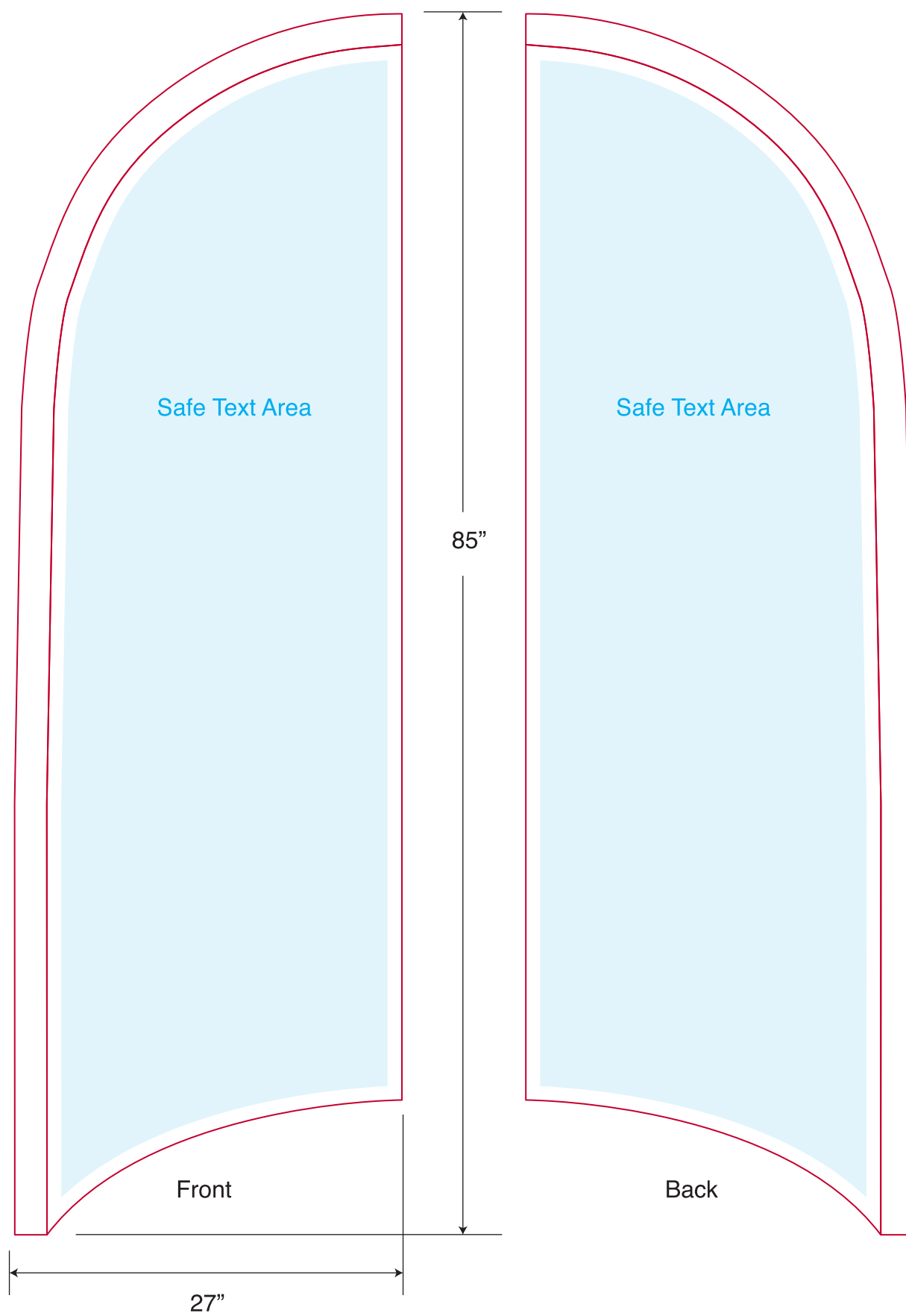
SMALL DOUBLE-SIDED DROP



Template 10% of actual size.

DURADOUBLE II

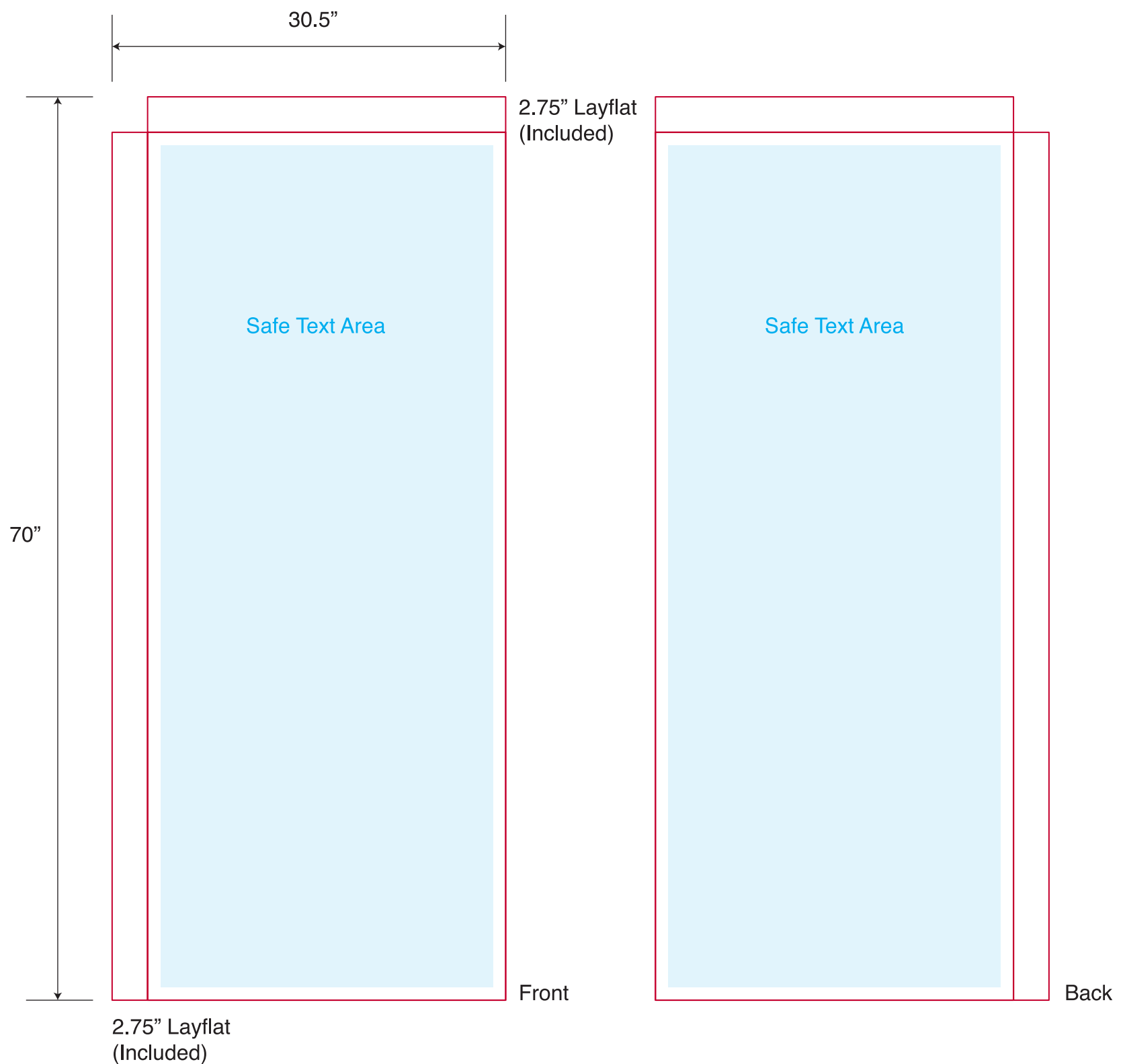
SMALL DOUBLE-SIDED FEATHER



Template 10% of actual size.

DURADOUBLE II

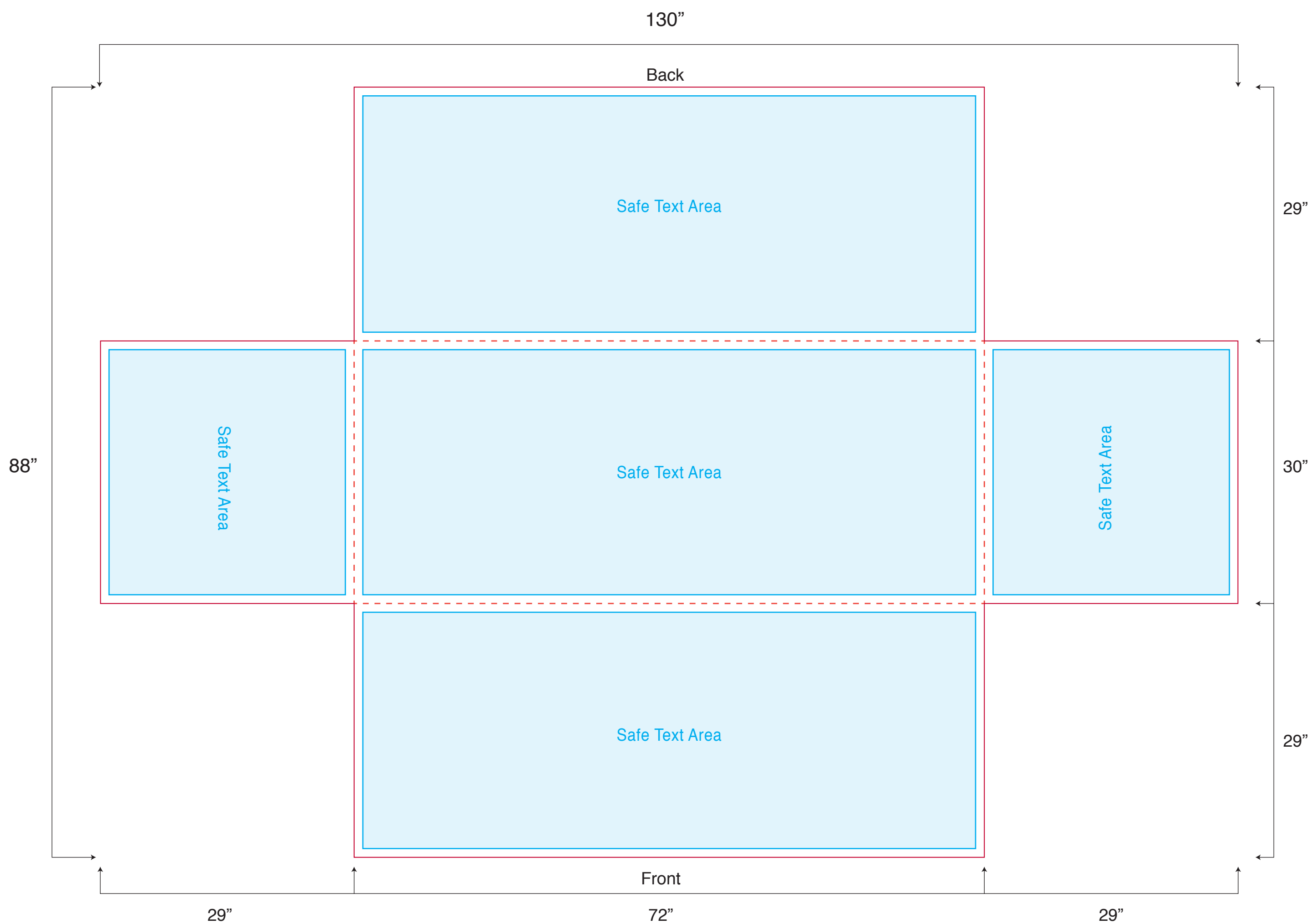
SMALL DOUBLE-SIDED RECTANGLE



Template 10% of actual size.

TABLECLOTH

6' FITTED

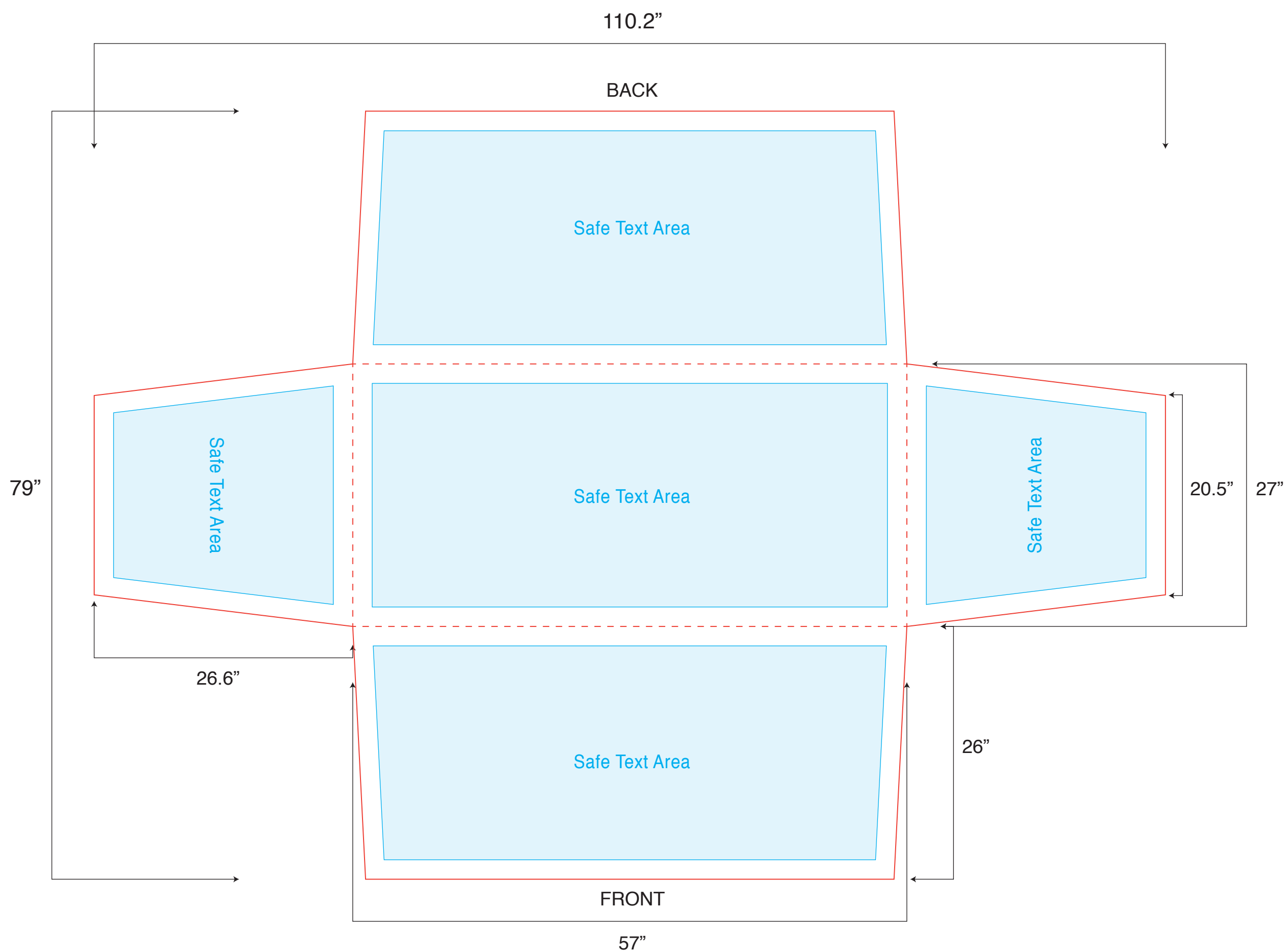


*If photographs are used in artwork, image resolution must be 2000dpi at 10% actual size or 200dpi at 100% actual size

Template 10% of actual size.

TABLECLOTH

6' STRETCH



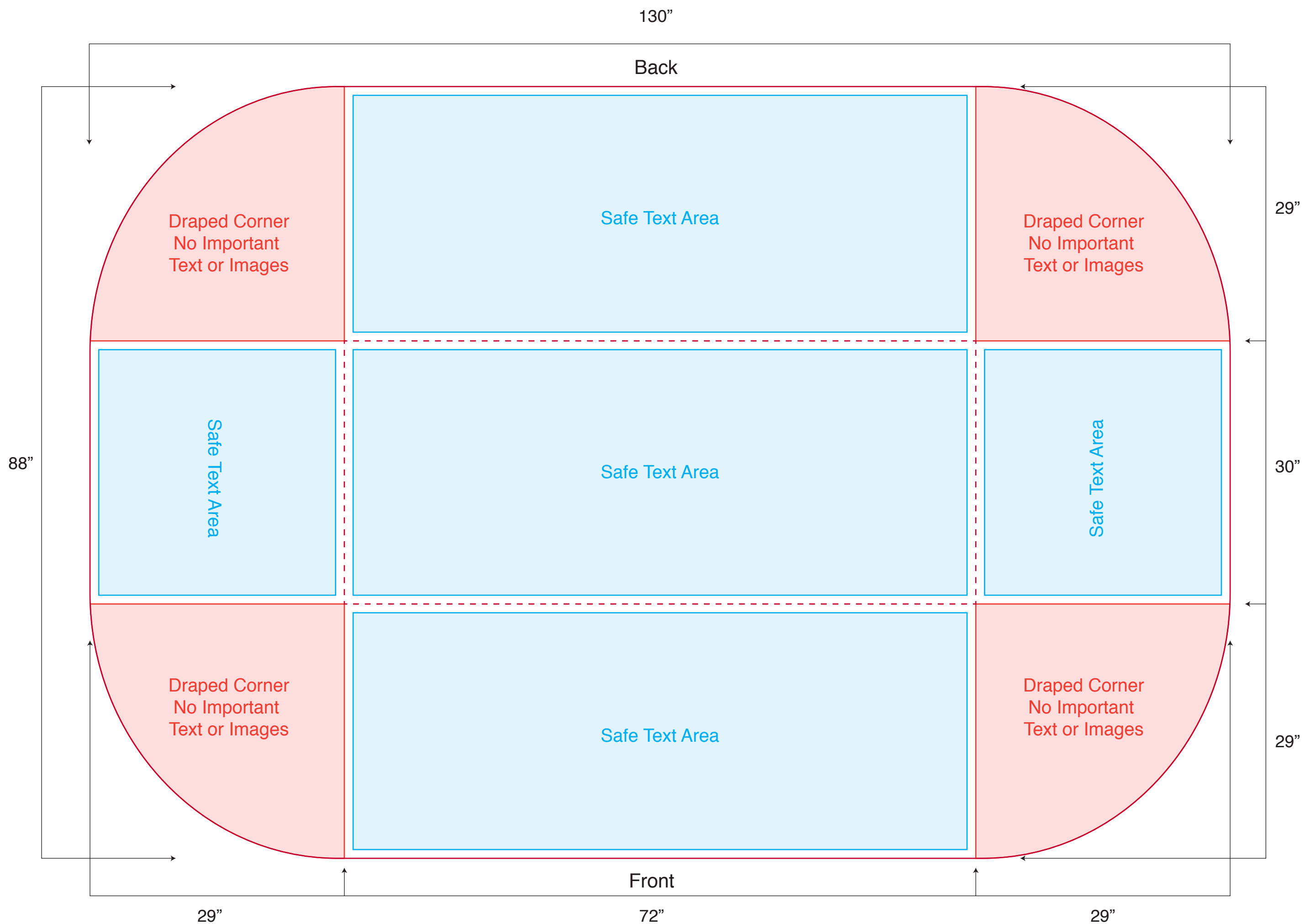
*If photographs are used in artwork, image resolution must be 2000dpi at 10% actual size or 200dpi at 100% actual size

NOTE: Stretch fabric does just that, it stretches! This often means that some minor distortion of the graphics will be visible on the final product. The stretch is what makes these tablecloths unique though. So, if you are concerned about distortion, keep key design elements in the centre of each panel.

Template 10% of actual size.

TABLECLOTH

6' THROW



*If photographs are used in artwork, image resolution must be 2000dpi at 10% actual size or 200dpi at 100% actual size

Template 10% of actual size.